

SIZES, CATALOG NUMBERS & SPECIFICATIONS

MOTOR-DRIVEN TROLLEY FOR USE WITH SINGLE OR TWO SPEED HOISTS

Catalog Number	Net Wt.	Std. Width Adjustment	Extended Adjustments with price added to std.		Trolley Speed	Optional Standard Speeds (fpm)	Special Speed (fpm)	Motor H.P.
			1st Ext. Flange Adj.	2nd Ext. Flange Adj.				
1/4 to 1 Ton Capacity								
MDT01	85#	3 ³ / ₈ " - 5"	5 ¹ / ₈ " - 7 ¹ / ₄ "	7 ¹ / ₂ " - 9 ¹ / ₈ "	75 fpm	50 & 100	25, 150	1/4
2 Ton Capacity								
MDT02	95#	3 ⁵ / ₈ " - 6"	6 ¹ / ₄ " - 8 ⁵ / ₈ "	8 ⁷ / ₈ " - 11 ¹ / ₄ "	60 fpm	40 & 80	30, 120	1/4
3 Ton Capacity								
MDT03	140#	4" - 6 ¹ / ₄ "	6 ³ / ₈ " - 8 ⁵ / ₈ "	8 ³ / ₄ " - 11"	50 fpm	75 & 100	25, 125	1/4

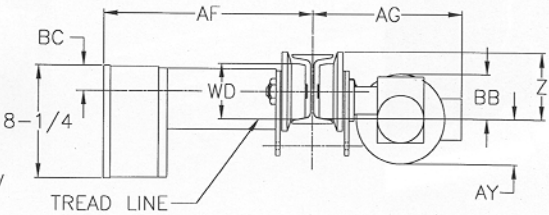
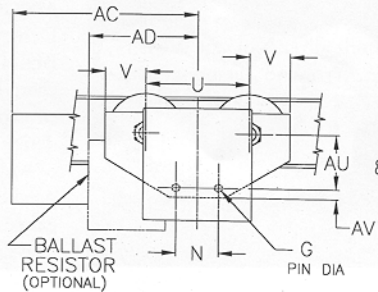
Always specify voltage when ordering. Voltages available: 115/230-1-60, 208-230/460-3-60, 575-3-60

115/230-1-60 is not available on trolleys for two speed hoists or two speed trolleys.

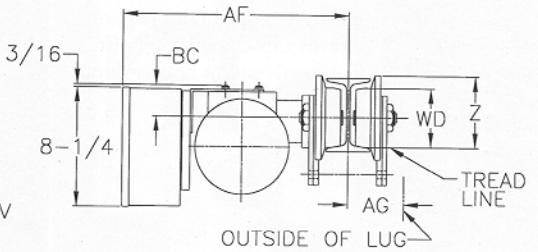
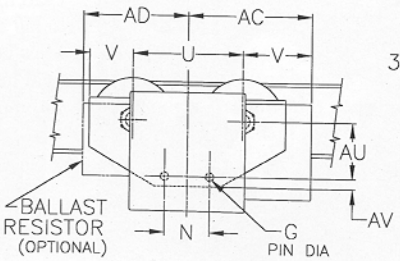
Two speed trolleys have a 3:1 speed ratio. Standard pendant drop from trolley is 7 feet. Longer cables are available.

Trolleys are equipped with 3-foot length power supply cable. Longer lengths are available.

HEAVY DUTY RIGID MOUNT TROLLEYS



1/4 - 1 Ton & 2 Ton Trolley



3 Ton Trolley

OUTLINE DIMENSIONS

Dimensions	1/4 thru 1 Ton Capacity	2 Ton Capacity	3 Ton Capacity
AC	12"	12"	13 ¹ / ₂ "
AD	8 ³ / ₁₆ "	8 ³ / ₁₆ "	8 ³ / ₁₆ "
AF Max.	16 ⁷ / ₈ "	16 ⁷ / ₈ "	16 ¹³ / ₁₆ "
AG Max.	12 ¹ / ₂ "	12 ¹ / ₂ "	5 ⁷ / ₈ "
AU	3 ⁷ / ₈ "	4 ¹ / ₈ "	4 ¹ / ₂ "
AV	3/4"	1 ¹⁵ / ₁₆ "	1 ³ / ₈ "
AY	2 ⁹ / ₁₆ "	1 ¹⁵ / ₁₆ "	—
BB Max.	3 ¹ / ₈ "	2 ¹ / ₁₆ "	—
BC	1 ¹³ / ₁₆ "	2 ⁷ / ₁₆ "	2 ¹ / ₈ "
G Dia.	5/8"	1"	1 ¹ / ₄ "
N	3 ¹ / ₈ "	5"	6"
U	7 ³ / ₄ "	9 ¹ / ₈ "	9 ¹ / ₈ "
V	3"	3"	3 ¹ / ₄ "
Z	4 ⁷ / ₈ "	4 ⁷ / ₈ "	4 ⁷ / ₈ "
WD	4"	4"	4"
Min. Radius	3'	4'	4'
Standard Flange Width Adjust.	3" - 5"	3 ⁵ / ₈ " - 6"	4" - 6 ¹ / ₄ "

If using a NEMA 4/12 panel, consult factory for dimensions due to add-on of counterweights.